

PROBLEM- BASED LEARNING INSTITUTE (PBLI) CATALOGUE



ABOUT US

The Problem-Based Learning Institute (PBLI) was established to provide differentiated, Problem-based Learning (PBL) oriented training programmes and consultancy services to external organisations who are interested to build PBL competencies as part of their learning and development solutions. Our programmes and services are grounded in Republic Polytechnic (RP)'s expertise in applying PBL. This is supported by the robust, multifaceted research carried out by the Centre for Educational Development and its rich experience in the design and governance of PBL practices at RP.



OUR SERVICES



TRAINING

PBLI offer two main types of training

- Public workshops for individuals who would like to develop their general understanding of PBL principles and related competencies to achieve desired outcomes, such as facilitation skills
- Customised workshop for organisations who are keen to explore the use of PBL or other learner-centred approach for a specific project or purpose and require targeted assistance with implementation to achieve their desired educational outcomes



RESEARCH

To deepen the Institute's training and to contribute to the scholarship of teaching and learning in PBL, research is undertaken in the following areas

- Student learning and outcomes
- Facilitation
- Curriculum design
- Staff Development
- Assessment



CONSULTANCY

PBLI consultancy services are wide ranging and are designed to meet individual and organisations learning and implementation needs in your particular domain or discipline

- Reviewing and providing assistance in the design and implementation of PBL curriculum
- Reviewing and providing assistance in the delivery of PBL practices, for example in facilitation, problem crafting, and curriculum design
- Training needs analysis

OUR PROGRAMMES



PROGRAMMES FOR TEACHING AND LEARNING

Short Courses/Programmes in

- Assessment
- Curriculum Design
- Facilitation
- ICT Enhanced Teaching & Learning
- Instructional Design
- Problem-based Learning
- Reflective Practice and Educational Research

Scan to find out more about the programme



PROGRAMMES FOR LEARNING AND DEVELOPMENT

Specialist Diploma in

- Coaching and Mentoring for Workplace Learning
- Youth and Student Support and Development

Short Courses/Programmes in

- Coaching and Mentoring
- Ed Tech
- On-the-Job Learning
- Problem-based Learning

Scan to find out more about the programme



MICRO-LEARNING PROGRAMMES

Interested in Teaching and Learning or Learning and Development courses but not sure which course might suit you? Try our free online taster courses.

Scan to find out more about the programme



CUSTOMISED COURSES/PROGRAMMES

We can develop customise training solutions to suit your organisational needs. Please contact us to find out more.



PAST CLIENTELE



List of selected clientele

- | | |
|--|---|
| Abbott | Nippon Institute of Technology (NIT) |
| Bendemeer Secondary School | Parkway College of Nursing and Allied Health |
| Building and Construction Authority | Parramatta Marist High School |
| Changi Airport Group | Republic of Singapore Navy |
| Civil Service College | Riverside Secondary School |
| College of Nursing and Allied Health | Shanghai Xinqiao Polytechnic |
| Deakin University | Singapore Aviation Academy |
| Defence Science and Technology Agency (DSTA) | Singapore Institute of Management |
| HMI Institute of Health Sciences | Singapore Management University |
| Institute of Technical Education | Singapore National Co-operative Federation (SNCF) |
| Islamic Learning Hub and Management Office (ILHAM) | Singapore Police Force |
| KLE Technological University | Starbucks Singapore |
| Majlis Ugama Islam Singapura (Muis) | Swinburne University of Technology |
| Management Development Institute of Singapore (MDIS) | Trent Global College |
| Newman College | Trisakti University |

What our Past Participant say?

- | | |
|--|--|
| <p>“Beneficial for learners and it is most essential for teachers.”</p> | <p>“The trainer is able to make us feel comfortable, tailor to our needs and answer all questions well.”</p> |
| <p>“Very clear, concise delivery of key points coupled with real-world hands-on practice.”</p> | <p>“Able to engage everyone and makes the 4 hours course seemed much shorter than it was.”</p> |
| <p>“This course improved my confidence and motivation to apply my virtual facilitation skills”</p> | <p>“It was really fun and interested. Great job. Will recommend to friends.”</p> |
| <p>“Very good energy and enjoyable session!”</p> | <p>“Active learning was encouraged in the sessions and it kept participants engaged.”</p> |

ABOUT THE TRAINERS



Our PBLI team consists of skilled practitioners, researchers, and academics who are not only academically qualified, but are well versed in the study of PBL and other practice of study.

To provide for a complete experience of learning at RP, a comprehensive range of academic professional development courses from foundation to specialised areas such as facilitation, curriculum design and academic research is in place to support the teaching faculty.



PBLI's experienced trainers have expertise in

- PBL curriculum design across disciplines
- Facilitation of PBL lessons and learner-centered lessons in different domains

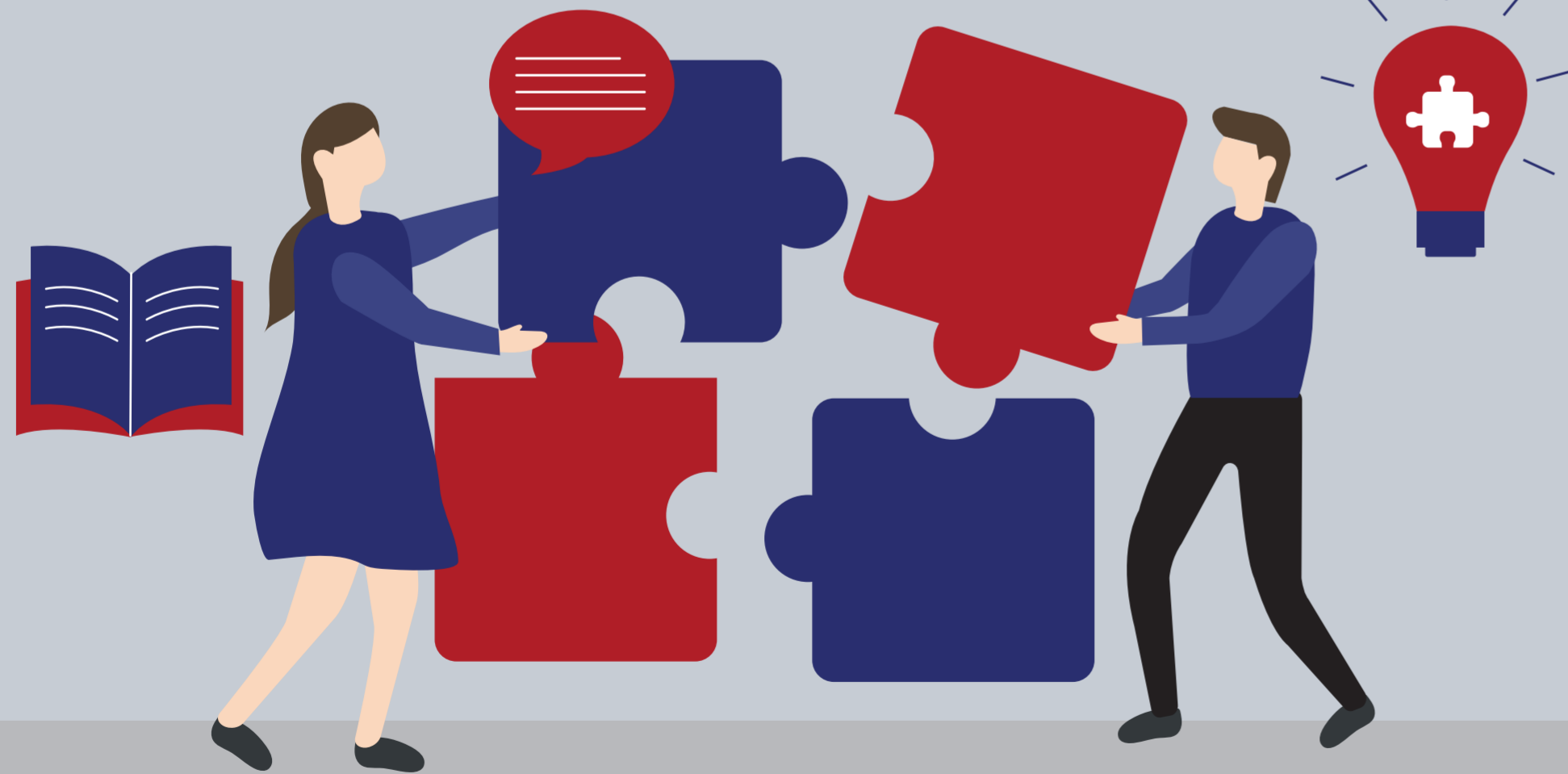
ABOUT PROBLEM-BASED LEARNING (PBL)

Promotes self-directed learning:

Learners take the initiative to select their problem-solving approach and take ownership of learning.

Enhances Critical and Creative Thinking Skills:

Learners generate ideas, clarify concepts and explore alternative ways to solve problems.



Allows Learners to Reflect on their Learning:

Learners critically reflect on and make sense of their learning.

ABOUT PROBLEM-BASED LEARNING (PBL)



Improves Information Searching Skills:

Learners engage in inquiry process to solve problems and analyse information to make informed decision.

Helps to Develop Collaborative and Deep Learning:

Learners co-construct knowledge and solutions together with teammates guided by the facilitator.

Creates Authentic Learning Opportunities:

Learners gained knowledge and skills through solving real-world problems.



**ABOUT
DESIGN AND DELIVERY**



**Builds confidence
in problem solving
approaches.**



**Promotes lifelong
learning.**

**ABOUT
DESIGN AND DELIVERY**



**Enhances
knowledge and
skills acquisition.**



**Promotes adaptability
and creativity in tackling
problems.**



Develops organisational skills.

ABOUT ASSESSMENT



Demonstrate acquisition of knowledge and the transference of skills to the workplace.

ABOUT ASSESSMENT

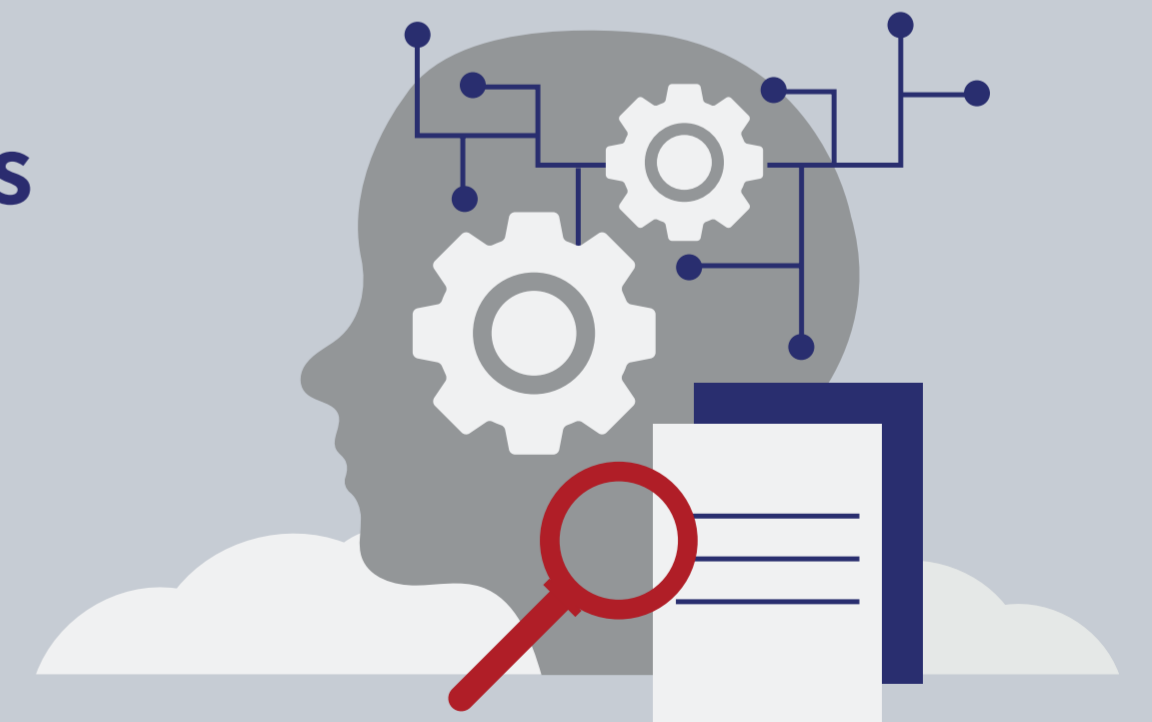


Craft reliable and valid test instruments in education



Assess learners' demonstration of knowledge, skills and attitudes using real-world authentic context

Develop higher order thinking skills, such as critical thinking and problem solving, in learners



ABOUT ICT ENHANCED TEACHING AND LEARNING

Content creation and content curation



Active and authentic learning



ABOUT ICT ENHANCED TEACHING AND LEARNING

Learner-centered activities and mode of instruction



Knowledge from multiple sources



Interactive and collaborative lessons



ABOUT REFLECTIVE PRACTICE AND EDUCATIONAL RESEARCH

Focus Group Discussion:

An effective research method to enable a group of individuals with similar interests to deliberate on a topic facilitated by a moderator.



Action Research:

Formulate research questions, research design, data analysis.



Communities of Practice (CoP):

Bring together a community to engage in a collective learning process through sharing their experiences and practices

ABOUT REFLECTIVE PRACTICE AND EDUCATIONAL RESEARCH

Literature Review:

Help a researcher to better understand a topic and develop his/her own perspective on the problem



Surveys:

Gather information from and about people to describe, compare, or explain their knowledge, feelings, values and behaviour about a topic under investigation



CONTACT US



www.rp.edu.sg/learning-and-teaching/pbli-programmes



pbli_programmes@rp.edu.sg



www.facebook.com/pblinstitute



www.linkedin.com/school/republic-polytechnic