

EASIPLANNER: A CLOUD BASED DELIVERY PLANNING SYSTEM

TECHNOLOGY OVERVIEW

EasiPlanner is specially designed to plan deliveries by considering traffic between peak and non-peak hours, preferred delivery zones and delivery time windows. In addition, historical delivery data is used to predict the loading and unloading time of each job in order to make a more reasonable delivery plan. EasiPlanner is able to assign delivery jobs to vehicles/drivers with optimised routes quickly. The map based user interface makes it very user friendly for new users. With it, the user can make delivery plans and generate optimised delivery routes easily.

The system consists of the following:

- Routing and scheduling optimisation algorithm
- Cutting edge technologies which leverage on technologies i.e. geospatial information, big data and cloud computing to put forth a seamless way to optimise vehicle routes.

POTENTIAL APPLICATIONS

Route optimisation for any company with a fleet of vehicles which requires planning or making deliveries. It can be used as a tool to revolutionise the delivery landscape in Singapore by significantly reducing the time windows that customers are usually given by delivery companies.

MARKET OPPORTUNITIES

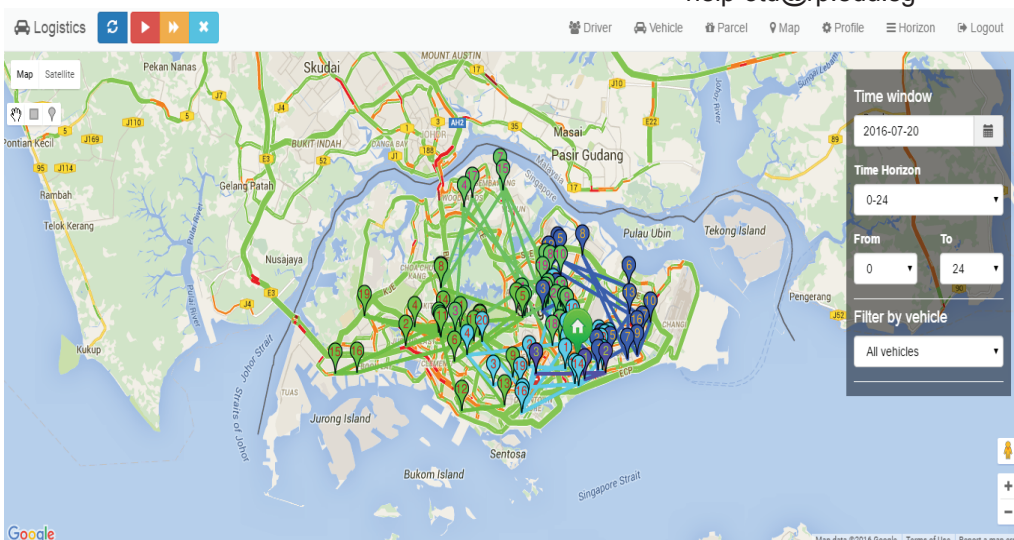
EasiPlanner is in line with the government push for optimising and leveraging technology in the logistics sector. This product is well-placed to meet the needs of companies to improve productivity.

COMMERCIALISATION

This system is available for licensing. Please fill up this [form](#) by 30 April 2017 if your company is keen on obtaining sub-licensing rights for Singapore and/or other countries. Only shortlisted companies will be notified to attend a briefing.

CONTACT DETAILS

help-otd@rp.edu.sg



Looking for an open innovation partner? Contact Republic Polytechnic today!

Whether you are looking for new ideas to improve your current business flow, need access to research and technology expertise, or require facilities to bring your innovative ideas to life, we may be the partner for you.

At Republic Polytechnic (RP), we bridge the gap between knowledge and application by facilitating information and technology transfer to industry partners. Taking a holistic approach, our team of experts can assess your business needs, provide consultancy, conduct feasibility studies, and render support to help increase your company's competitiveness.

Facilities and Equipment

RP is home to state-of-the-art facilities and the latest technology, which are on par with industry standards. You can access these facilities by collaborating with RP on joint projects or through facility and equipment rentals.

Research and Development

Transform your ideas into reality. RP's multi-disciplinary applied R&D centres can work with you in many different ways, including exploiting new technologies, developing new products and streamlining processes.

Current Opportunities for Collaboration and Commercialisation

- Innovative Single-tube Multiplex Diagnostic Platform for Dengue and Chikungunya Viruses
- Low Cost Wireless Patient Weight Measurement System for the Physically Impaired and Bedridden
- New Catalysts for Sustainable Liquid Biofuels
- New Chemical Entities with Potential Applications in Photodynamic Therapy
- Thermoelectric Micro-coolers for Electronic and Optoelectronic Applications
- Visual Sentiment Analytics for Social Media Analysis
- Wireless Proximity Sensing for Safety and Security Applications
- Wireless Stress Monitoring System
- Portable Hydrogen Generator and Low Cost Hydrogen Fuel Cell System Development
- All-Solid-State Lithium Ion Thin Film Micro Battery
- Cloud-based Logistics Tracking

For more details, visit <http://www.rp.edu.sg/Industry.aspx>, or email us at help-otd@rp.edu.sg.